

**Montlake Community Club Board Minutes**  
**October 11th, 2016**  
**Boyer Children's Clinic Lower Conference Room**

**In attendance:**

Board members: Bryan Haworth, Kerry Clayman, John O'Neil, Sharsti Sandall, Tyler Blitz, Carol Cordy, and Lori Sabado, Michele Layton, Juan

Rohit Manokaran, Technical advisor

WSDOT representatives: Todd Harrison, P.E. Deputy Engineering Manager, Daniele Dunjic, P.E., Project Engineer

Kathy Laughman, Barbara Wright, Lionel Job, Tracy Dominguez

Amy Payne

Bernard VanDekamp (from SDOT- working with WSDOT)

Curtis Knapp (works for Rep Brady Wakenshaw)

Meeting commenced at 7:03pm.

**Special Guest: WSDOT (Daniele & Todd)**

- Went over slide presentation, which is attached to meeting minutes.
- Highlights
  - Funding to get West approach bridge was successful and construction will begin in 2018
  - Design build contract phase to begin
  - Working on Montlake phase since January, will take 2017 to send out contracts and review proposals. Construction will begin in 2018
  - Major sewer line that goes under the 520 running parallel to Montlake Blvd. This is the reason why they had to adjust construction plans and now need to acquire the Montlake Market and 76 gas station
  - WSDOT has not made an offer on the property yet and is in very early stages of discussions
  - Kathy made it clear that the owner of the Montlake Market is willing to work with WSDOT and change the access to the Market if that is what is necessary.
  - Staging area of MOHAI old site will be staging until the end of the Montlake Phase. Arboretum staging area will stay throughout- 2024.

- Bernard from the city talked about how SDOT is trying to mitigate some of the traffic impacts on the neighborhood. Several attendees encouraged him to try and come up with a larger regional traffic plan to come up with a more holistic plan rather than looking at Montlake in isolation. He agrees that challenges to the neighborhood are tough, but committed to working on solutions.

**Special Topic:** Dana West, King County Water Quality Planner/Project Manager and John Phillips, ENV SP, CSO Program Lead

- Explained what combined sewer overflows (CSO) are and highlighted on the map where CSO's occur in Montlake.
- Federal and state regulations only allow one big overflow relief per year, but we are exceeding this. Need better solutions, one of which includes building a underground storage tank to store water during storms.
- Had one CSO over the weekend in Montlake, about 1 million gallons of rainwater and sewage were released into Lake Washington in a 20-30 minute time frame, can check on website for when these happen
- John showed the areas that have been identified in Montlake for a waste water underground storage tank.
- Appears that the best site, with the least amount of impact to existing structures, might be under the track at the Montlake Playfield.
- Start design in 2022 and have it finished by 2029, could be sooner but not later. Must be done with all projects by 2030
- Timeline for construction is about 2-3 years
- WSDOT and sound transit have shared all their information about soil conditions and data collected during their projects
- The board is optimistic about the location of the community center playfield as a potential site for underground storage and would like to work with King County Wastewater division to explore this further, possibly even connecting it with WSDOT's project since it could tie into the sewer challenges that 520 construction is creating.

### **Discussion of September meeting minutes**

- Google docs went well, minutes approved.

### **Treasurer's Report**

- Value went up on the two pocket parks
- Transferred \$1000 from Paypal account, \$500 left
- 3 donations from Paypal since the garage sale, Lori took many cash donations on the day of the yard sale.
- Total accounts have \$27,877.69 (\$3662.60 in checking, \$2560.45 in savings, and \$21,654.64 in the money market account).

## **OLD BUSINESS**

### **Turkey Trot Fundraiser-Sharsti:**

- Tyler and Sharsti reported on the meeting with the Seattle Special Events Committee. Action items from that meeting were to reach out to neighbors and Broadmoor Golf Club and neighborhood as well as all neighbors impacted by street closure.
- Items outstanding for the permit: insurance and neighbor outreach. Michele will work with insurance agent and Bryan will keep trying to get signatures from remaining Lynn St. neighbors
- Waiver: Sharsti brought examples of the waivers used for the Ballard and Bainbridge Island Turkey Trots as well as a generic one provided by Racewire. We decided it would be good to reach out to both our insurance agent as well as an attorney to make sure that we as a club are protected. Bryan gave the names of former board members that might be able to help.
- Sponsors: We reviewed the draft of the letter to send to businesses. We decided to focus primarily on Montlake businesses for donations for the first year to keep the race local and give our local businesses as much exposure as possible.
- Discussion about profit vs. donation: Sharsti identified the University District Food Bank as the recipient of net profits and food donations. Some on the board wondered if we should keep part of the profits as a fundraiser for the MCC, but most agreed that it would be best to donate all profits.

### **Business District Improvement update-Kathy**

- Successful meeting with community in July
- Articles have continued to be posted on Montlake.net to keep it in front of the neighborhood. First day that recent article went online generated 150 hits, so the neighborhood seems to be engaged.
- Kathy heard comments back with worries about road diet and how it will affect cut through traffic. Reached out to Paul for language of how to reply to these comments. Looking for data from SDOT to describe effects of previously implemented traffic diets on communities and traffic. Also waiting on traffic study, which is being conducted by SDOT.
- Business owners are worried about how the construction would impact their business
- Jim Curtain has agreed to come to our next meeting
- Paul Fusel suggested we don't have another neighborhood meeting just to have a meeting, only if we have new information to report. Also need 3 weeks of advertising before having one
- Committee to install public art within the business district is in the process of being formed. Kerry suggested we split the content on the website to focus on art separate from road diet.

### **All Montlake Yard sale report-Lori**

- Under budget, went off really well. At 8:00 people were roaming the streets
- Kerry will do a post on the Montlake flyer to summarize the event.

- Donation site went perfect. Was perfectly clean and organized.

### **Holiday Lights-Bryan**

- Holiday Spirit \$4000 for what we did last year, if we commit in the next week, price includes the discount
- Some people wanted more- higher on the trees and also lights on the gas station. For these additions, the cost would be \$4838
- Motion made to spend the extra money by Tyler, seconded by Michele, motion passed
- Fundraiser ideas- reach out to both Pub and Café Lago for dinners, visits from Santa etc.

### **NEW BUSINESS**

#### **City Council Vote on to allow homeless camping in parks**

- City revised the provision, but didn't publicize it until today. Would specify that camping could not happen in maintained parks, schools, or on private land
- Goes in front of committee on Friday and then goes in front of the council on the 22<sup>nd</sup> then goes to Mayor who says he will veto it
- John will draft a letter from the MCC to state our opposition.

#### **UW master plan**

- Agree with John's recommendation that the two buildings out of scale near the cut should be eliminated as possibilities. John will draft a letter from the MCC.

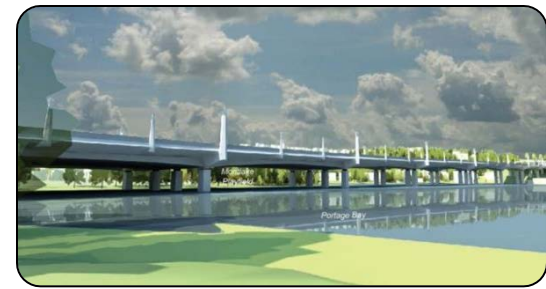
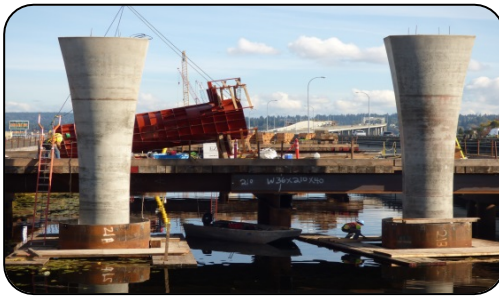
The meeting ended at 10:30 p.m.

Respectfully submitted,

Sharsti Sandall  
MCC Secretary

# SR 520 Program

Building safety and mobility improvements  
along the SR 520 corridor



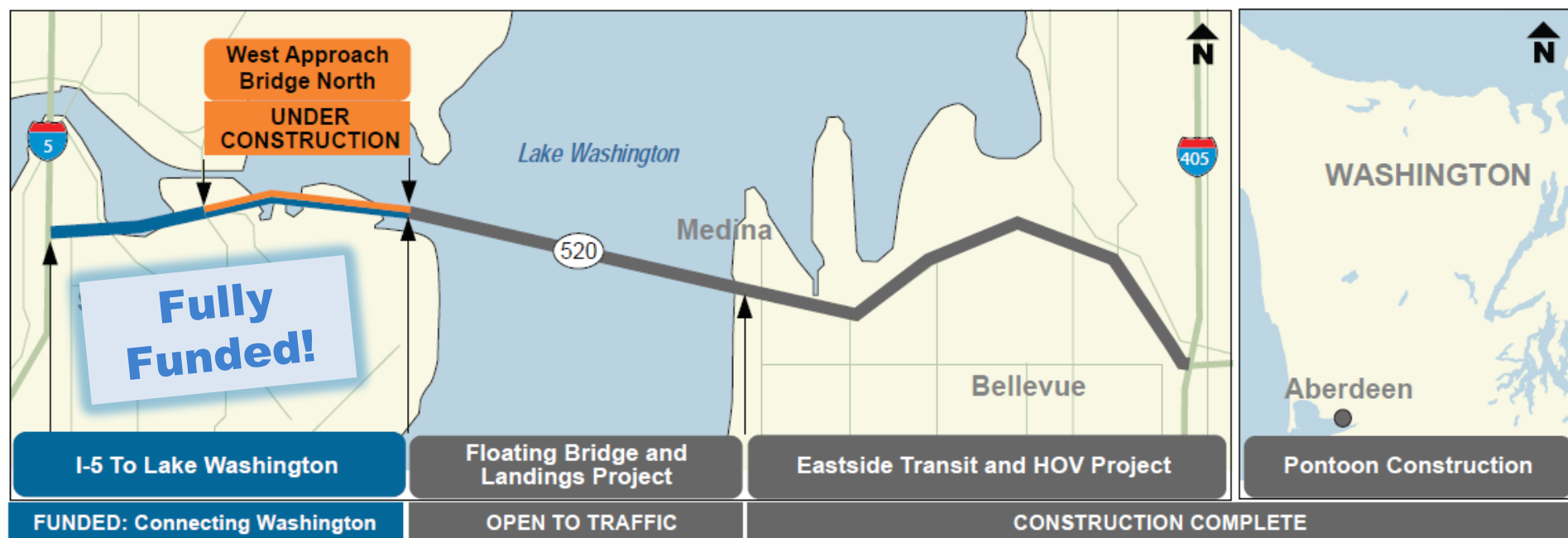
**Todd Harrison, P.E.**  
SR 520 Program Deputy Engineering Manager

**Daniele Dunjic, P.E.**  
SR 520 Project Engineer

**Montlake Community Club Board Meeting**  
October 11, 2016

# SR 520 Program overview and timeline

## Program map



## Program schedule

- Eastside Transit and HOV Project: Opened 2014
- Pontoon Construction Project (Aberdeen): Completed 2015
- New floating bridge: Opened April 2016
- West Approach Bridge North: Opening summer 2017
- Remaining west side corridor: Fully funded, construction to begin by 2018



# Rest of the West project overview



- Phase 1: Montlake Phase**  
Construction to begin by 2018  
Estimated duration: 4-5 years
- Phase 2: Portage Bay Phase**  
Construction to begin in approx. 2020-2022  
Estimated duration: 6 years
- Phase 3: Montlake Cut Crossing Phase**  
Construction to begin as early as 2024  
Estimated duration: 3 years

① Possible future use of a portion of the NOAA property, approximating the area shown in the FEIS, for public pedestrian-bike path is subject to agreement by NOAA as part of ongoing mitigation discussion.

② City-owned property under review by the City of Seattle.

# Montlake property update

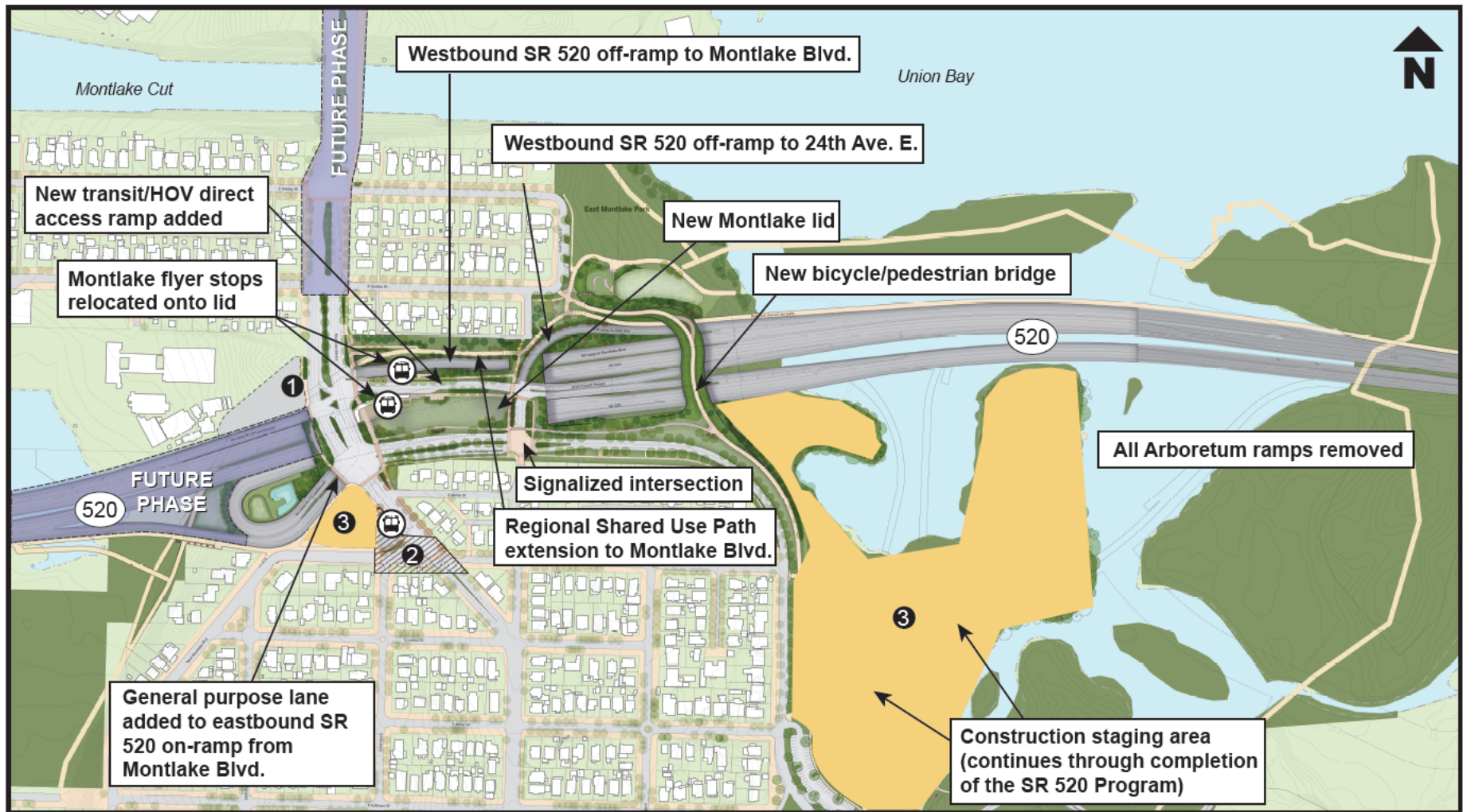
- WSDOT anticipates needing to acquire the property where the Montlake Market and 76 gas station are located.
- In recent engineering evaluations, WSDOT determined that it would need to acquire the property to build some of the project's planned improvements.
- The need to remove access from several driveways was included in the 2011 Final Environmental Impact Statement.
- We are in discussions with the property owners and tenants that operate the market and gas station.
- We will continue to keep the community updated as this process unfolds.





# Montlake Phase key elements

(shown at completion in approx. 2022-2023)



- ① Possible future use of a portion of the NOAA property, approximating the area shown in the FEIS, for a public pedestrian-bike path is subject to agreement by NOAA as a part of ongoing mitigation discussion.
- ② City-owned property under review by the City of Seattle.
- ③ Area needed for project improvements and construction staging and phasing.

Note: Construction schedules and staging areas are subject to change as design and construction plans are confirmed.

# Recap: 2016 Montlake Phase public outreach

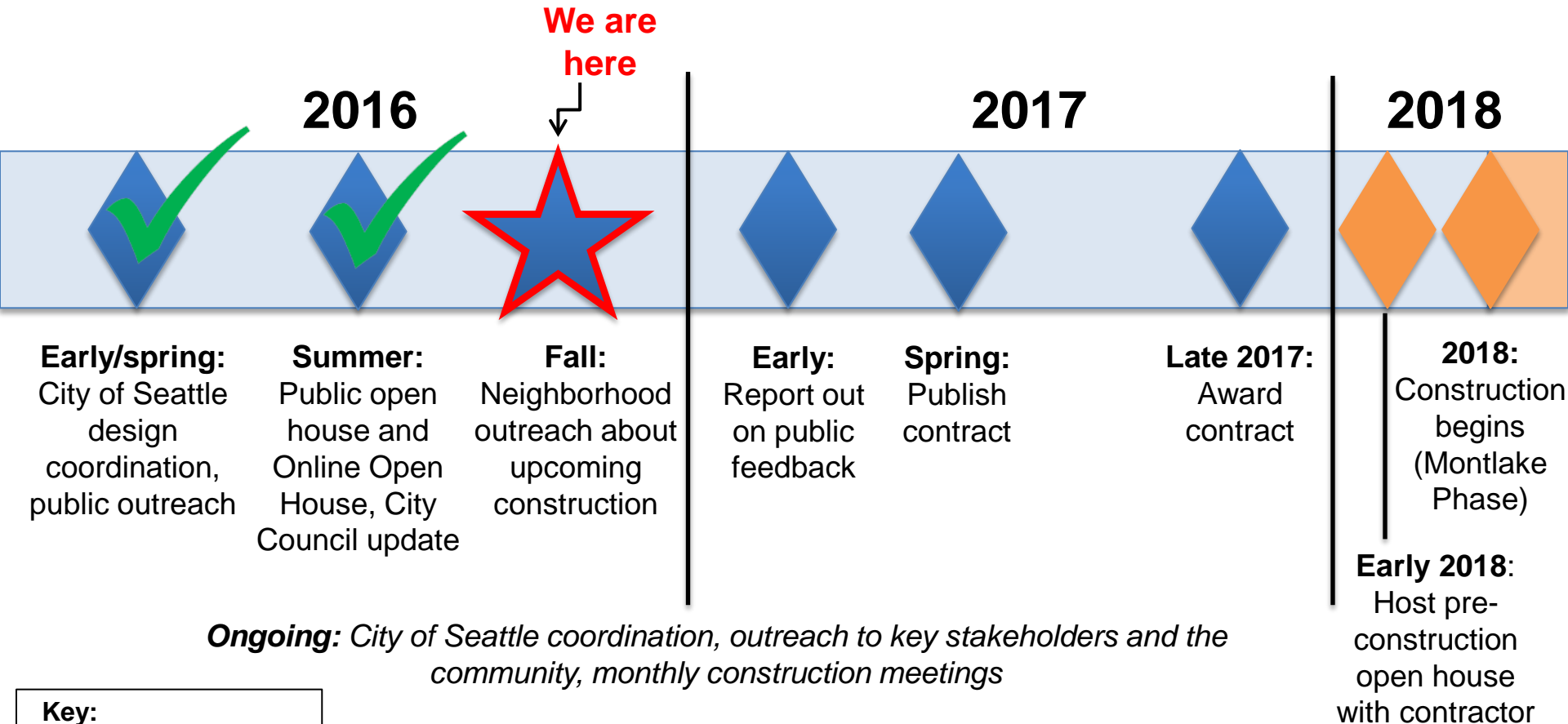
In 2016, WSDOT conducted outreach to share WSDOT's final preliminary design and obtain feedback from the community:

- ✓ **January - June:** Seattle Design Commission process
- ✓ **June 22 – July 8: Online Open House** website live to view design information from home (2,838 visitors, 514 comments)
- ✓ **June 28: Open House Event** at St. Demetrios Hall in Montlake, Seattle to view display boards and a corridor model, and speak with project staff (292 attendees, 110 comments)
- Note: a summary of public comments and feedback at these events is available online at:  
[www.wsdot.wa.gov/projects/sr520bridge](http://www.wsdot.wa.gov/projects/sr520bridge)
- ✓ **July 18:** Seattle City Council presentation
- ✓ **September:** Launched frontline neighbor outreach
- ✓ Presented at approximately 17 briefings to various community organizations in 2016



*Nearly 300 people joined WSDOT and the City of Seattle at the June 28 open house in Seattle.*

# How is WSDOT preparing for construction of the Montlake Phase?



## Key:

◆ Project/outreach milestone

◆ Construction milestone

**Note:** These dates reflect the current project plans, but are subject to change as needed.



# Upcoming outreach opportunities

## Fall 2016

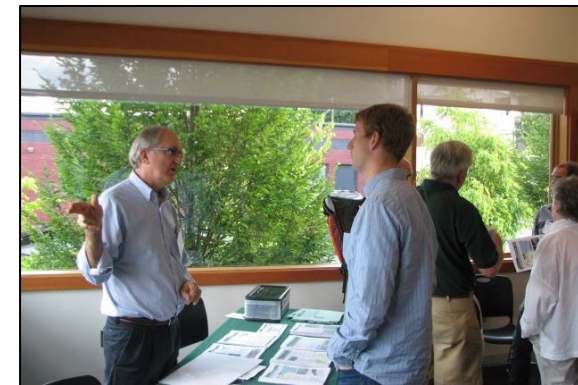
- Share updates at select monthly SR 520 construction meetings
- Meet with neighbors adjacent to the construction site
- Neighborhood Traffic Management Plan (NTMP) public comment period
- Continue to work with City of Seattle and other partners and project stakeholders
- Meet with community councils and local groups as interest exists; please request a briefing or meeting if you're interested!

## Early 2017:

- Report out on what we heard and next steps
- Ongoing: WABN construction progress outreach

## 2018:

- Community Construction Management Plan public comment period
- Tree and Vegetation Management and Protection Plan published
- Pre-construction open house with the contractor
- Begin construction, stay informed about activities





# Community plans to manage construction impacts

WSDOT and the city of Seattle are working together to develop a set of community plans to prepare for and ease construction effects. These plans will be shared with the public prior to the start of construction of the Montlake Phase.

Plan title	Purpose	Available to the public
<b>Neighborhood Traffic Management Plan (NTMP)</b>	Enhance safety and mobility in the Montlake area during and after SR 520 construction	<b>Fall 2016</b> (including public comment period)
<b>Community Construction Management Plan (CCMP)</b>	Identify opportunities to avoid, minimize and mitigate construction impacts, share resources available to the public	<b>2018</b> (including public comment period once contractor is hired)
<b>Tree and Vegetation Management Plan (TVMPP)</b>	Describe the standards and project-specific best management practices that will be used as guidance to preserve and protect trees and vegetation within the limits of project construction.	<b>2018</b> (once contractor is hired)

# NTMP (Neighborhood Traffic Management Plan)

**What is NTMP?** The NTMP, or Neighborhood Traffic Management Plan is a living document which is updated for each phase of SR 520 construction. It is being developed by WSDOT and the city of Seattle to catalog and develop solutions for community traffic concerns in the Montlake corridor and surrounding neighborhoods.

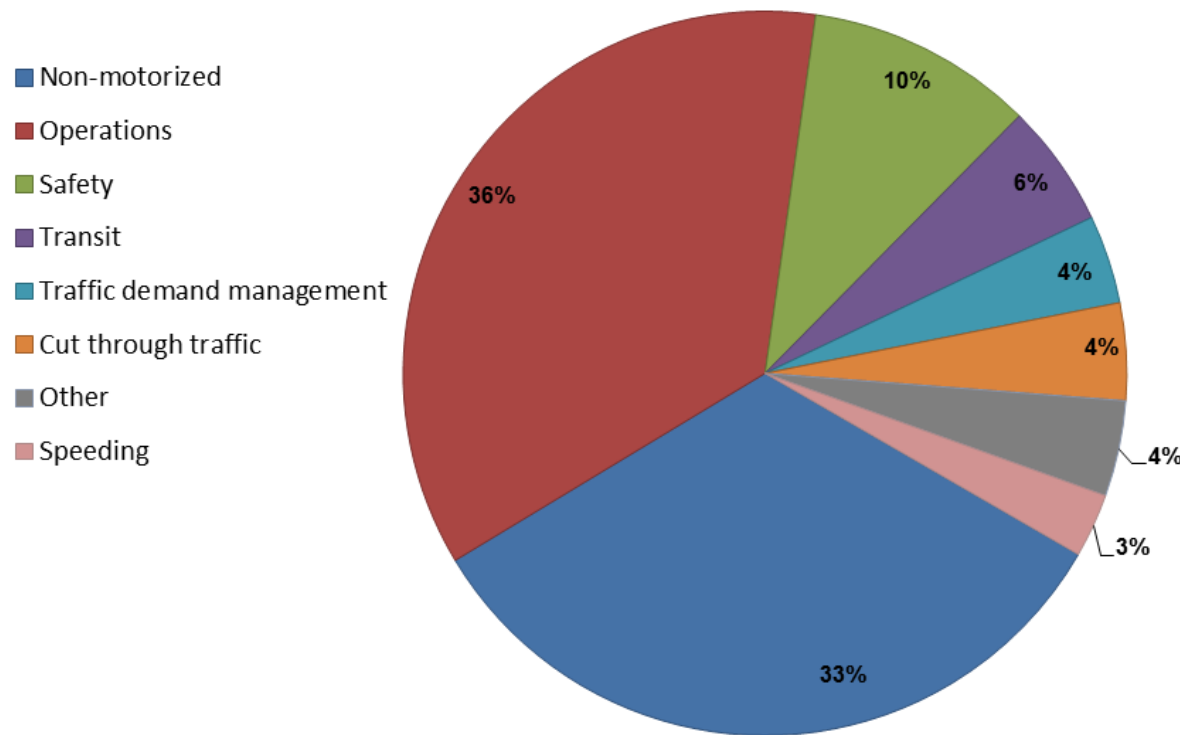
The plan will define traffic management measures to proactively reduce project construction effects and develop long term traffic management strategies.



*View of existing traffic on Lake Washington Boulevard*

# NTMP: What we've heard and next steps

Since 2011, WSDOT and the City have gathered extensive feedback to identify public concerns related to traffic in the Montlake corridor. Public input will be used to inform traffic management solutions in the NTMP specific to the Montlake Phase.



## Next Steps

- **Fall 2016:** Develop NTMP draft for public review
- **Fall 2016:** Hold public comment period to gather feedback on the draft report
- **Early 2017:** WSDOT and the City update NTMP and share what we heard

# How to stay informed about the project

## Your resources to ask questions:

- Send an email to: [SR520Bridge@wsdot.wa.gov](mailto:SR520Bridge@wsdot.wa.gov)
  - Share comments or ask questions (we'll respond)
  - Request regular email updates
  - Join the mailing list
- For general inquiries during business hours, call our **information line**: 206-770-3554
- For urgent matters, call our 24-hour **construction hotline**: 206-708-4657
- Visit our **website**:  
[www.wsdot.wa.gov/projects/sr520bridge](http://www.wsdot.wa.gov/projects/sr520bridge)
- Available online now: public Q&A, recent design display boards, and updated Montlake Phase web pages.
- Request a presentation or briefing to your organization, we'd be glad to meet with you!





# Questions?